



## Bead-a-Gram, April 16, 2010 Upcoming Local Happenings

### Special Edition Bead-a-Gram

Because the event below is happening this weekend, we've decided to make an exception and e-mail this Bead-a-Gram to you, in addition to posting it on the website. For future issues, go to [www.bsnm.org](http://www.bsnm.org) and click on Events.

We publish a new Bead-a-Gram approximately every two weeks. Its purpose is to consolidate all the information we receive from businesses who are not members of the Bead Society, to save clutter in your mailbox while keeping you informed.

Be sure to check the BSNM website often, for the latest beading news and events.

### HUGE Bead Liquidation Sale – May 8 & 9

Hundreds of thousands of beads will be liquidated this weekend, at or below cost. A New Mexico bead store recently went out of business with most of its inventory intact. They're having an invitation-only liquidation sale this weekend.

*According to the sale organizers, "There was almost nothing we didn't carry in our bead store. You name it we had it, gemstones, pearls, crystals ( from three different countries) seed bead from Japan, Czech republic, and French seed beads including vintage and extra small up to size 22 seed beads. We have bone, brass, horn, glass, American and foreign lampwork, dichroic, clay, raku, sterling silver, pewter, etc. We have findings and stringing materials. We have owned a bead store for 25 years, I myself have been a beader for 40 years. We had a 5250 square foot store in a small town, but we traveled all over the west to bead shows."*

For anyone interested they also had rubber stamps, inks, embossing powder, glitter, scrapbooking stuff and paper over 500 different kinds of paper. They could bring that if anyone expresses interest. Email [aprilredbird@yahoo.com](mailto:aprilredbird@yahoo.com) for rubber stamp stuff.

This sale is only being advertised to Bead Society members and on Craig's List under "Crafts" but those readers must e-mail for directions because the organizers don't want to

be inundated. Only about a dozen Craig's List readers have emailed for directions so far, so this is practically a private sale for Bead Society members.

**Sale hours:** Saturday May 8, 10 a.m. to 7 p.m. and Sunday May 9, noon to 4 p.m.

**Driving Directions:**

The sale will be held at the Timberline Professional Plaza at 12836 Lomas Blvd. NE. This is between Chelwood Park (which is a street) and Nakomis, on Lomas, very close to Lomas and Tramway.

Head East on Lomas. Just past Chelwood Park you'll pass a police station on the right and after that you'll see a white castle looking building (also on the right) that is a Day Care center. Turn right into the Day Care parking lot. To the right you will see a bank of offices. We are the second office to the right just past Aimee Abeyta's State Farm office.

If you miss the driveway heading east on Lomas, you will come to Autozone on the corner of Nakomis and Lomas. There is a traffic light there. Turn left and head west on Lomas. Just past the convenience store and car wash is a cross-over to Lomas East. You take an almost immediate right turn after you turn back onto Lomas. This is less than a block from the driveway you missed.

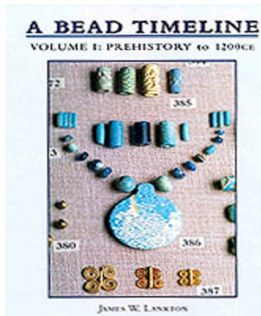
Balloons will be out to mark the driveway.

---

**AZ Bead Museum News**

## SAVE THE DATE

### James Lankton to Speak at The Bead Museum!



Renowned historian James W. Lankton will be at The Bead Museum on Tuesday, May 18, 2010. With a deep passion for beads, bead technique and bead history, Lankton is one of the top bead historians in our country today. A former Medical Doctor, he retired from active practice to obtain a degree in Archeology. Since then he has become best known for his interest and knowledge of the technical aspect of bead making. He has authored the book "A Bead Timeline - Volume 1: Prehistory to 1200 CE" which can be found at The Bead Museum gift store.

More details about this exciting special event to follow. For now, be sure to mark your calendar and save the date!!

The Bead Museum  
5754 W. Glenn Drive  
Glendale, AZ 85301  
623-931-2737

Sign up for the School of Beadwork emails

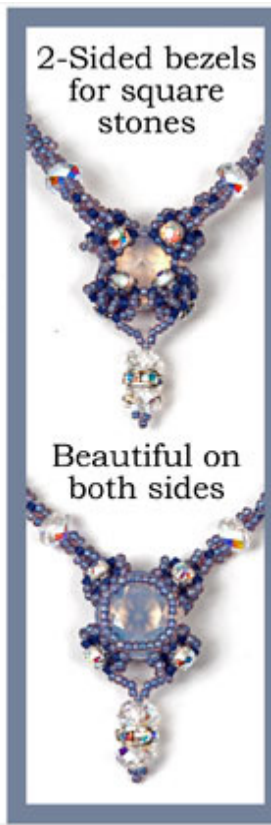


## School of Beadwork

Exclusive kits by  
Carol Wilcox Wells



Elegantly crafted



2-Sided bezels  
for square  
stones

Beautiful on  
both sides

**Learn** to stitch a fine, dimensional box chain incorporating faceted rondelles.

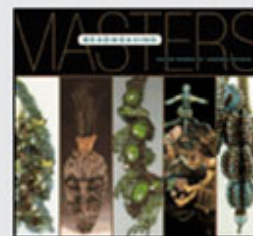
**Learn** to bezel square stones that are beautiful on both sides.

**Wear** it long or...

Overlap the chain and wear it as a multi-strand necklace.

books by Carol Wilcox Wells >>

Learn more about the most popular bead stitches with beautiful illustrations and concise instructions.



See what the masters are beading.

web: [www.schoolofbeadwork.com](http://www.schoolofbeadwork.com) ♣ 805.440.2613 ♣ email: [info@schoolofbeadwork.com](mailto:info@schoolofbeadwork.com)

## About Bead Society Meetings

Bead Society meetings are held monthly at 6:30 p.m.  
at Heights Cumberland Presbyterian Church,  
8600 Academy Rd, N.E., Rm. 407.

Our next meeting is Monday, May 24.

Contact us and more info:

[BeadSocietyNM@gmail.com](mailto:BeadSocietyNM@gmail.com)

[www.BSNM.org](http://www.BSNM.org)